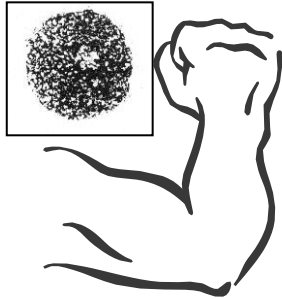
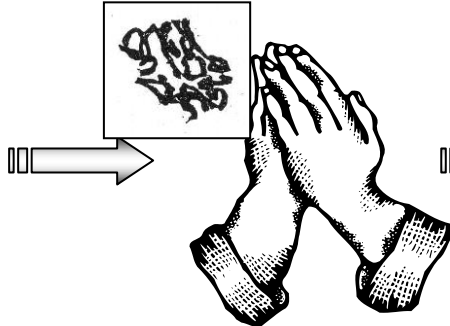


MITOSIS MAMBA



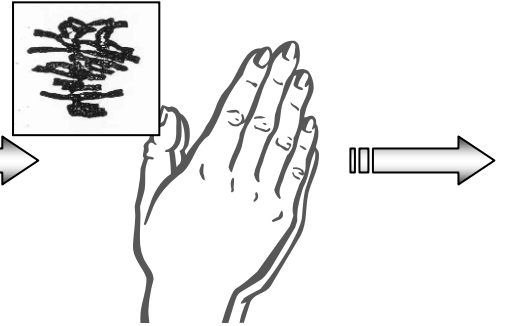
One clenched fist (INTERPHASE)

Fist = nucleus with 5 indistinct chromosomes (fingers).
Rub two hands = chromosomes duplicate



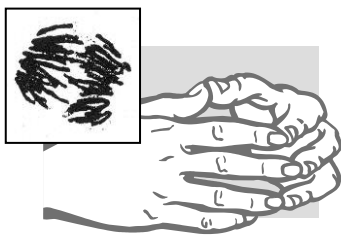
Slowly open fingers (PROPHASE)

Now you can see your fingers = chromosomes condense (become short and fat).



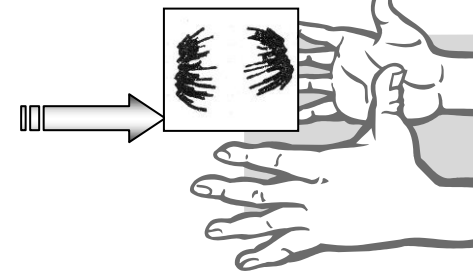
Praying hands (METAPHASE)

Hands held directly in front = chromosomes now on the cell equator



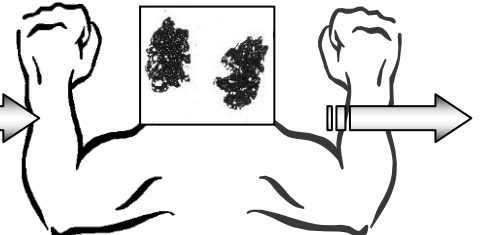
Separate hands (quickly) (ANAPHASE)

Separation of fingers = splitting of centromeres & separation of chromatids



Separated open hands (TELOPHASE)

2 hands = 2 sets of chromosomes at opposite poles of the original cell



Make 2 fists (2 NUCLEI)

2 fists = chromosomes relax and form 2 daughter nuclei



Cleavage! (CYTOKINESIS)

Finally the parent cell splits into 2 new cells.